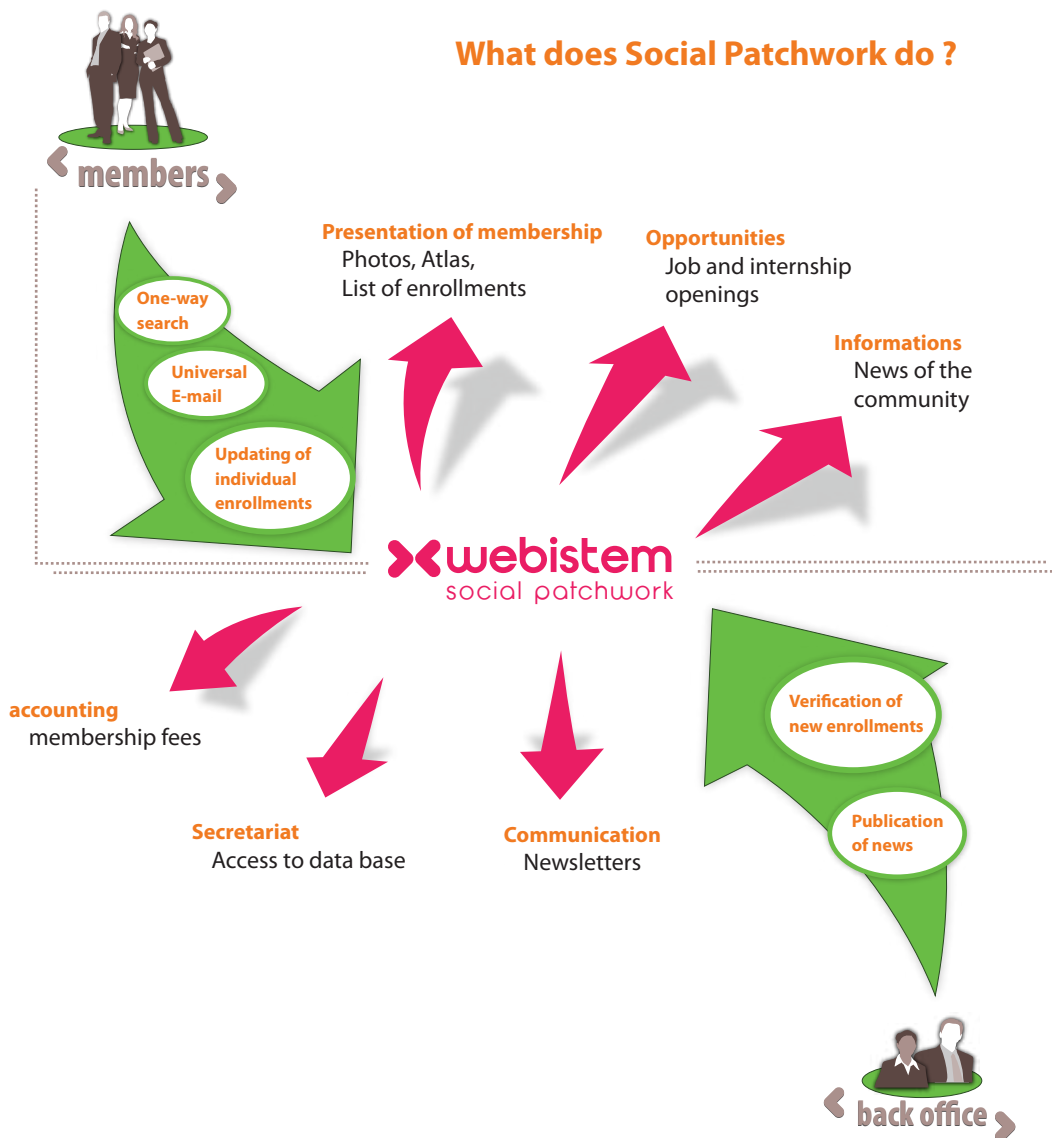


What does Social Patchwork do ?



Universal E-mail

Serves as initial vector of your community's identity.

Each member of your community is given an e-mail address :

name.familyname@community.org



Messages sent to your universal address arrive directly in your habitual e-mail by re-direction.

Messages coming from a member of your community show his or her universal address in the "sender" box, automatically changed by the software.

Recent Comments

The responsiveness and professionalism of Webistem led to the rapid installation of a reliable tool, capable of meeting the needs of our users.

Charles Bogaert

Association of ICS Bégulé Alumni

Thanks to Social Patchwork, our organisation came back to life ! It is the ideal software to meet all kinds of requirements. The universal e-mail system is the perfect solution to help each alumnus get in touch with all members of the community. Webistem guided us in defining our needs, then in conforming to our specifications. Up-dates arrive regularly and spontaneously, which shows both follow-up and a continuous improvement of the application.

Loïc Morel

President of ECE Alumni

Webistem conceives and publishes on-line solutions for communities and businesses. We currently propose four software solutions as well as the development of individual services.



Do you wish to have further information about "Webistem Social Patchwork"? Have a free demonstration? Request an estimate?

www.webistem.com

+33 1 84 16 68 00